

Compact and Economic Bottle to Bottle Engineering Design and Fabrication

Polaris



Bottle to Bottle Engineering Pioneer from Asia

About BoReTech

Bottle to Bottle Engineering Pioneer from Asia



BoReTech is a professional environmental mechanical engineering company which specializes in the recycling of PET bottle and production of polyester.

BoReTech system covers our 25 years manufacturing experience, and the products are upgraded constantly. In recent years, BoReTech joined with his partner and developed the Small Scale Bottle to Bottle process (including washing, pelleting, SSP).

This production line is high performance but less investment.

The management idea of BoReTech is to promote resource recycling over the world and create best commercial value to encourage energy saving & carbon reducing so as to protect our earth.



Services

- Investment feasibility analysis.
- Project planning and equipment configuration.
- Whole plant design:
 - Main Process Engineering
 - Subsystem Engineering
 - Utility Engineering
- Process assurance and operator training.
- From basic design to turnkey project.

All technology including washing, pelletizing and SSP from Asian advanced suppliers

High-end rPET applications upgraded to a new step

Applications

- Bottle grade chip
- High tenacity polyester industrial yarn
- High-strength strapping band

Special for

- Especially suitable for small and medium enterprises in the third world countries which has no polymerization facility.
- Non-food contact bottle blowing enterprise.
- High I.V. chip downstream users

Features

- Stable performance, economic investment and high C/P value.
- All spare parts supplied from Asia to keep maintenance cost inexpensive.
- Long-term experience and quality control method of washing line will provide excellent and stable quality of PET flakes for continuous and stabilized feeding of pelletizing and SSP.
- IAS (Integrated Automation Solution) system provides effective combination of online sewage management, water circulation and implements remote monitoring, production automation and prevents human error.
- Energy-saving and environmental-friendly: reuse heat energy from pelletizing and SSP in washing process

Capacity

1000 KG/H Output for SSP,
2000 KG/H Input for Washing Line

Options

- Optical Sorting Machine
- 2# Crushing
- Water-saving System

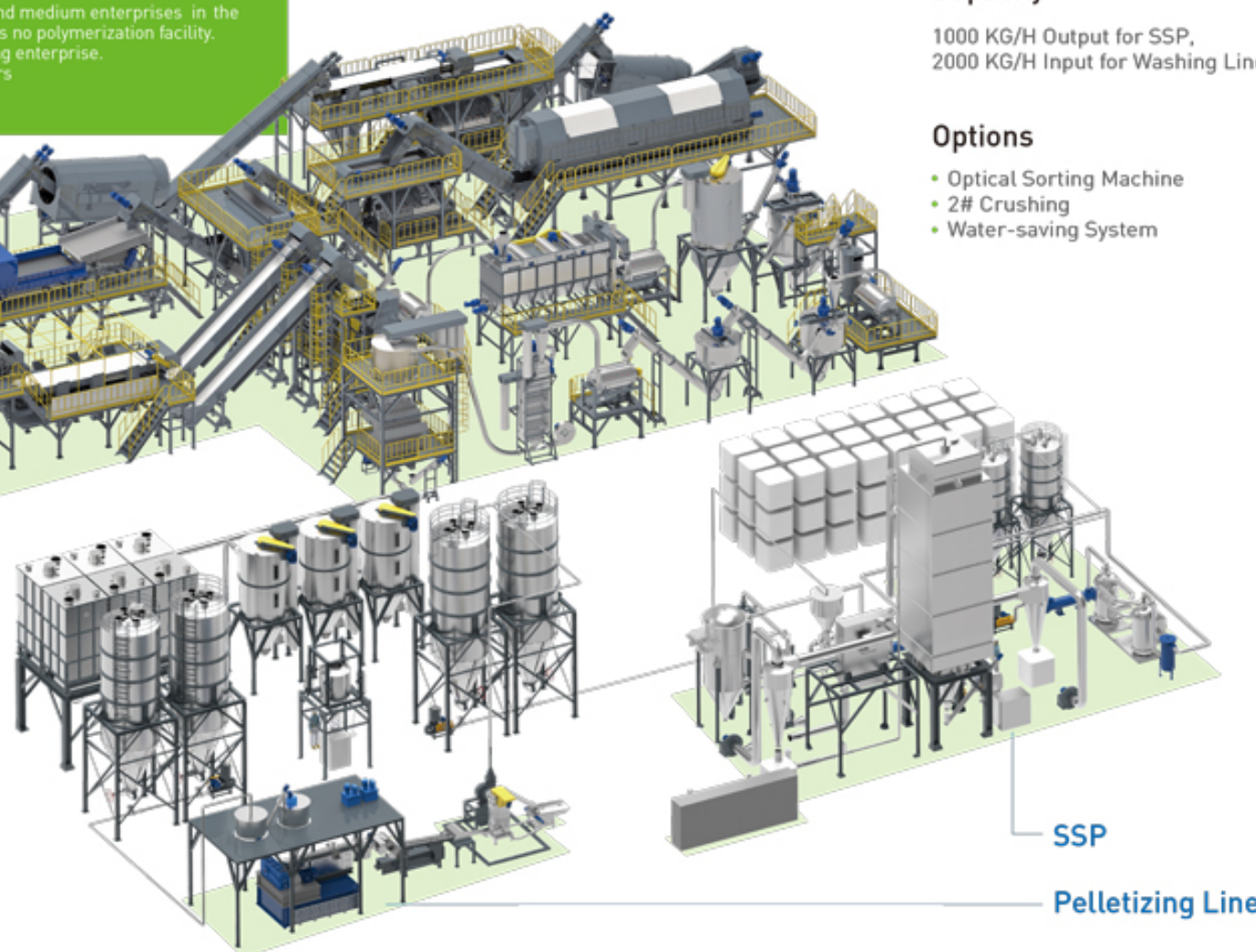
Washing line

Background

BTB process of PET bottle recycling industry is long supplied by European and US enterprises exclusively. High investment and large-scale production capacity form an entering threshold for small and medium enterprises to be involved.

Based on 25 years' professional experience of PET bottle washing, recycling equipment fabrication and turnkey project engineering, BoReTech integrates a complete economic BTB facility which includes PET bottle washing, pelletizing and SSP by joining hands with well-known equipment suppliers in Asia. It is aimed at the small and medium-size enterprises which have no polyester polymerization plant in their countries to afford this investment. BTB is the only way to sustainably recycle PET bottles in infinite loop.

*For food-contact product, FDA/EFSA approval is additionally required.

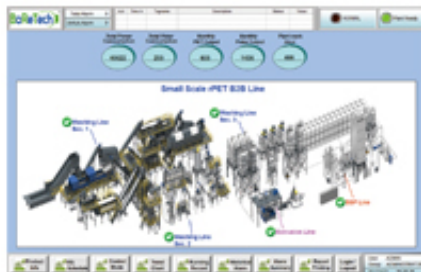


IAS System

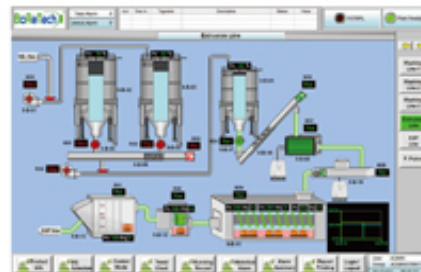
A fully advanced automatic and intelligent control system can be built in the line for easy and better operation. This system can be designed to have control optimization based on the each production line, what's more, we're able to develop customized modules , and so on, with functions mentioned above, we're capable of enhancing product operation, device monitoring, and production management.



BTB product resume



System interface



BTB extrusion line

Estimated Plant Parameters

Item	Category	Washing Line	Pelletizing Line	SSP
Installation Power	KW	530	570	470
Required Area	m ²	2000	360+120 underground	500
Cooling Water	m ³ /hr	0	20	30
Chilling Water	m ³ /hr	0	0	15
Steam Consumption	kg/h	1000	0	0
Compressed Air	Nm ³ /h	10	10	10
Nitrogen Consumption	Nm ³ /h	0	10	80

Average Consumption

Item	Category	Washing Line	Pelletizing Line	SSP
Water	m ³ /ton-product	1.5	0.2	0.3
Electricity	KWH/ton-product	120~180	260~350	180~230
Steam	kg/ton-product	600	0	0
Nitrogen Consumption	Nm ³ /ton	0	6	40~60
Manpower	person/shift	9	2	2

*All data above can be modified per energy-saving measures



Zhejiang Boretech Environmental Engineering Co., Ltd.

No. 888, Jiuliting Avenue, Caoqiao Street, Pinghu City, Zhejiang, China, 314214

T: +86-573-8512-0186 F: +86-573-8511-3959

E-mail: sales@bo-re-tech.com

www.bo-re-tech.com



Agent

--