

LAB VISION INSPECTION SYSTEM FOR PET PREFORM NECK



**MEASURING TIME FOR ONE PREFORM
(DIMENSIONS, RADII AND ANGLES)**

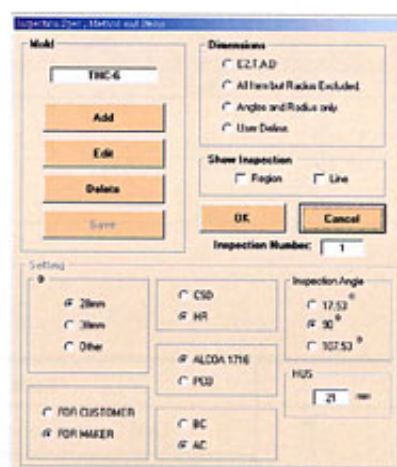
30 SECONDS

FUNCTIONS & FEATURES

**EASY TO OPERATE WITH NUMEROUS
MEASURING OPTIONS**

SELECTION OF PROGRAMS SUITABLE FOR;

- BOTTLE MANUFACTURER
- MOLD MANUFACTURER
- SELECTION OF PREFORM TYPE e.g. CSD, HR both before and after Crystallised neck finish Preforms
- USER SELECTABLE POINTS OF MEASUREMENT; all or any of the dimensions, Radii or Angles are selectable



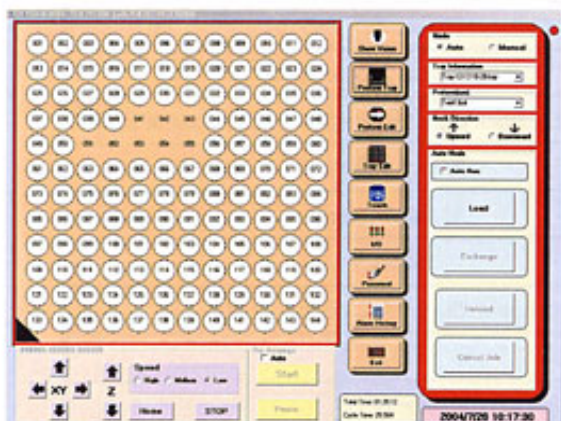
**ONE STOP MEASUREMENT FOR ALL
EXTERNAL NECK DIMENSION**

- UNATTENDED MEASUREMENT FOR A FULL SHOT OF PREFORMS
- Place the full shot in the tray and Q-VISION will complete the measurements of all the loaded preforms; UNATTENDED!
- SELECTIVE MEASUREMENT**
MANUALLY PLACE ONE OR JUST A FEW PREFORMS IN THE TRAY FOR MEASUREMENT Q-VISION READS THE CAVITY NUMBERS!

MAXIMUM TRAY CAPACITY

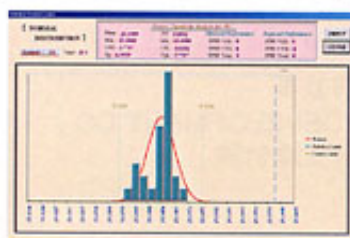
144 PCS FOR Ø 28 mm

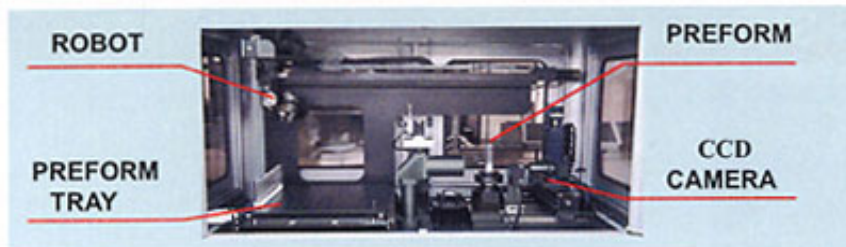
100 PCS FOR Ø 38 mm



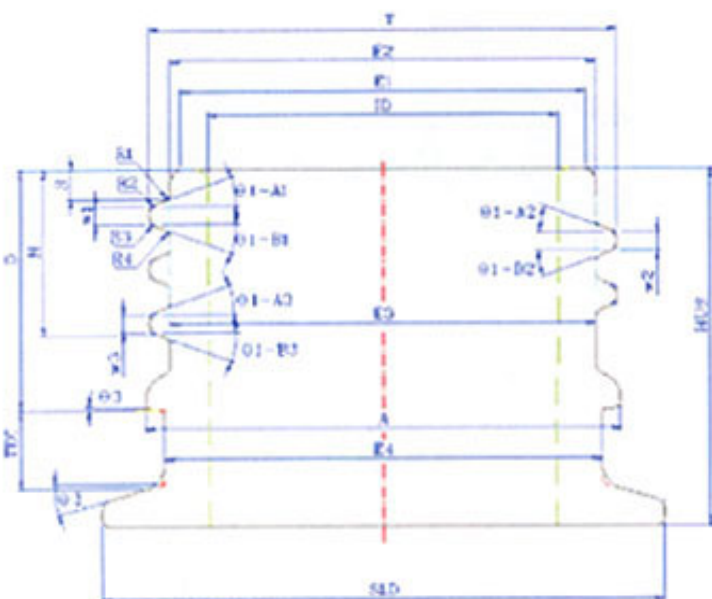
- BUILT-IN STANDARD REFERENCES FOR
POPULAR NECK FINISHES**

- STANDARD Type Alcoa-1716 & PCO Ø 28 mm (before and after Crystallised neck finish Preforms)
 - OPTIONS: Ø 30 mm, Ø 38 mm, Ø 43 mm
 - USER SET UP OF CONTROL LIMITS
- Built-in SPC; INCLUDING NORMAL DISTRIBUTION PROCESS CONTROL CHARTS AND PROCESS CAPABILITY SUCH AS Cp AND Cpk
- PREFORM WEIGHT OPTION



AUTOMATIC INFEED SYSTEM**PREFORM MEASURING RANGE**

HEIGHT OF NECK 5 mm - 32 mm
 LENGTH OF PREFORM 80 mm - 170 mm
 DIAMETER OF NECK 10 mm - 45 mm



PREFORM TYPE	MEASURING
PCO	★ Dimensions 18 Positions ★ Angles 8 Positions ★ Radii 12 Positions TOTAL 38 POSITIONS
ALCOA	★ Dimensions 16 Positions ★ Angles 6 Positions ★ Radii 8 Positions TOTAL 30 POSITIONS

- SPECIFICATIONS -

	Item	Specification
General	Unit Dimension (L x W x H)	950 mm x 1,780 mm x 1,940 mm
	Unit Weight	1,400 Kg
	Power Source	3 Phase 220 VAC
	Air Source	5 kgf/cm ² at 200 litres/min
Inspection	Inspection Method	CCD with LED Back Light illumination + LED Coaxial Light
	CCD Resolution	1378 x 1023 Pixel
	Inspection Time	30 Sec/Preform
	Preform Inspection Capacity	144 pcs
	Dimensions Measured	Lengths, Diameters, Angles, Radii
Control System	Computer Host	IPC
	Monitor	17" LCD
	Operating System	Windows 2000
	CPU	Pentium 4 2.4GHz
	Language	Chinese/English
	SPC	Available



合默麟開發有限公司
 BOTTLE-TOP DEVELOPMENT CO.,
 台灣南投市南崗三路11號

540 NO.11, NAN-GANG 3 RD., NAN-TOU CITY, TAIWAN
 TEL : 886-49-2258335
 FAX : 886-49-2258199
 E-MAIL: marketing@bottop.com