

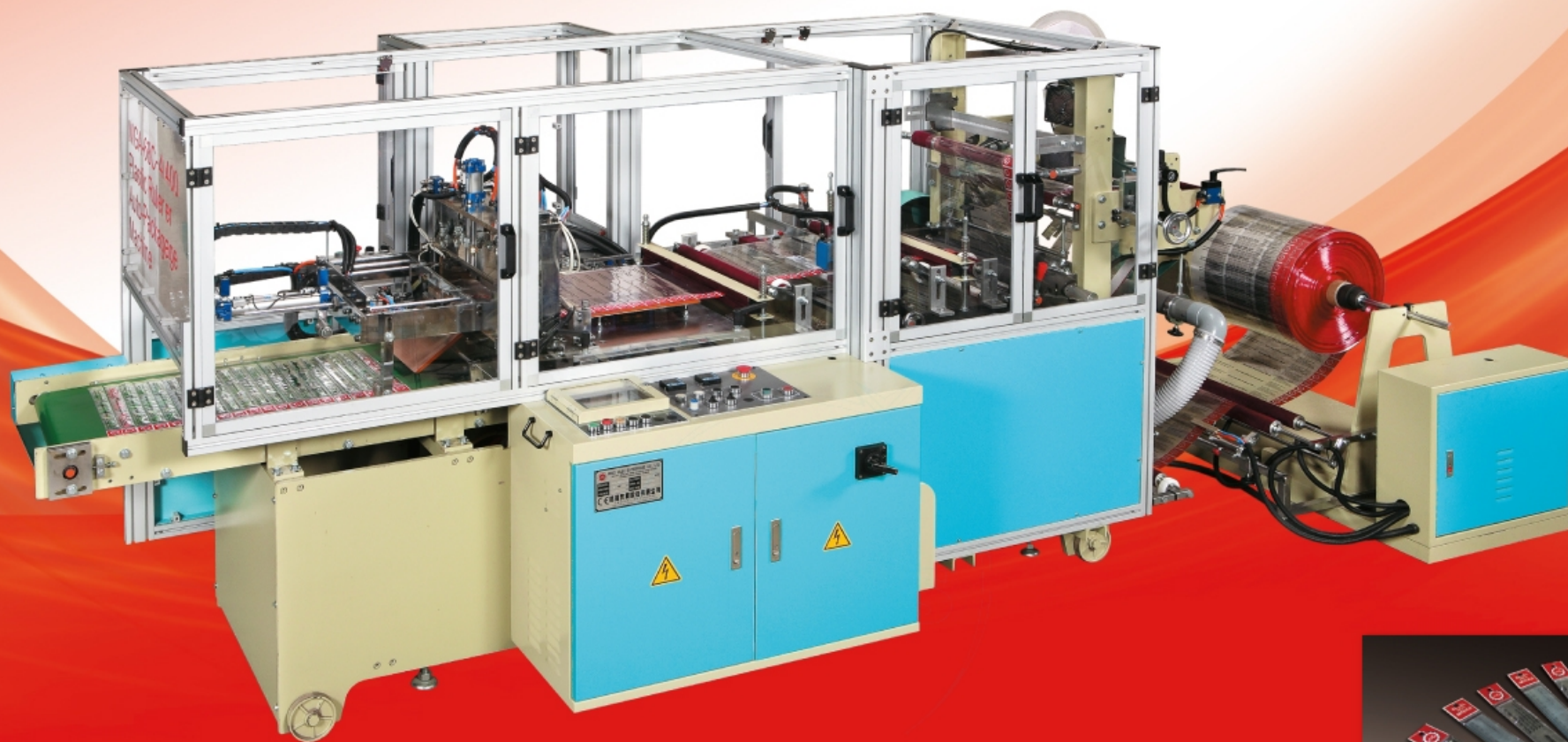


MING JILEE

We are a Professional Plastic Extruder and
Converting Machine Manufacturer

MGA-68C-400

Auto. Ruler Feeding and
Packing Machine



www.mingjilee.com

MGA-68C-400

Auto. Ruler Feeding and Packing Machine

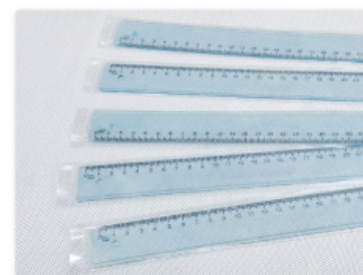
SPECIFICATION

Available Packed Product	Ruler, Pen
Wrap Material	BOPP, PP
Size Range	One Size
Production per Min	13 - 20 pcs / min
Ultrasonic Welding System	1.2 kw × 1 pc
Power Requirement	4.5 kw
Machine Dimensions	5100(L) × 2100(W) × 1700(H) mm
Packing Dimensions	4350(L) × 2235(W) × 2200(H) mm
Net Weight	1550 kg
Gross Weight	1780 kg

ILLUSTRATION



Adhesive Tape



Heat Sealing



Hanging Hole Punching +
Ultrasonic Dotting

OPTION

1. Auto. Feeding System (for other size)
2. Punching Mold (for hanging)

FEATURES

1. Manufacturing of the packing system for ruler is fully automatic, from material feeding → ultrasonic dotting → hanging hole punching → packed product feeding → heat side sealing to become the packed product.
2. Each unwinding device is equipped with the edge position controller to make sure the position of the feed material remains precise.
3. This machine is equipped with various precision and durable punching molds with a very low breakdown rate, connecting to the servo motor and digital computing unit for length control to allow a very precise punching position.

銘機實業股份有限公司
MING JILEE ENTERPRISE CO., LTD.

No. 76-8, Ming-Ho, Ming-Ho Vil., Shan-Shang Dist., Tainan City, Taiwan (R.O.C)
Tel : 886-6-578-3420 Fax : 886-6-578-3347 E-Mail : mingjilee@mail.mingjilee.com

www.mingjilee.com