



**Packing Your Life
Forming Your Future**

Thermoforming Mould



Hong Zu Mould Enterprise



Hong Zu Mould Enterprise Co.,Ltd

42-2, LN.49, DongFeng ST., ShuLin DIST., New Taipei City 238, Taiwan(R.O.C)

TEL:886-2-86863211

FAX:886-2-86864169

<http://www.hongzu.com>

Thermoforming Tool





About HongZu Innovation Efficiency Precision

Rigid Thermoforming mould manufacturer Hong Zu has been running its centre for development and innovation for almost three decades. The new centre is located at Hong Zu' s headquarter where a new building established in Taipei 2012.

Innovation

The whole idea of Hong Zu Mould Company, design and tooling development process take place under one roof, which allows for a smooth and accelerated transition from research and development to launch.

The facility also features complete multi-workshop which is supported by a mold & tool shop with machinery, such as a 3D scanner, digital printer, rapid prototyping equipment, CNC machines, Programming Center, de-bug thermoforming line.

Efficiency

The aim of Hong Zu is to offer a superior service to our customers by facilitating the creation of new ideas, 3D designing, quick prototyping and sampling on-site.

Precision

Hong Zu is a pioneering mould company in Asia, who supplies comprehensive line for a wide range of plastic packing products, including PP, HIPS, PS, PET, OPS, PVC, EPS, PSP (PS foam), PLA (Biopolymer), and even new-developing biomaterials.

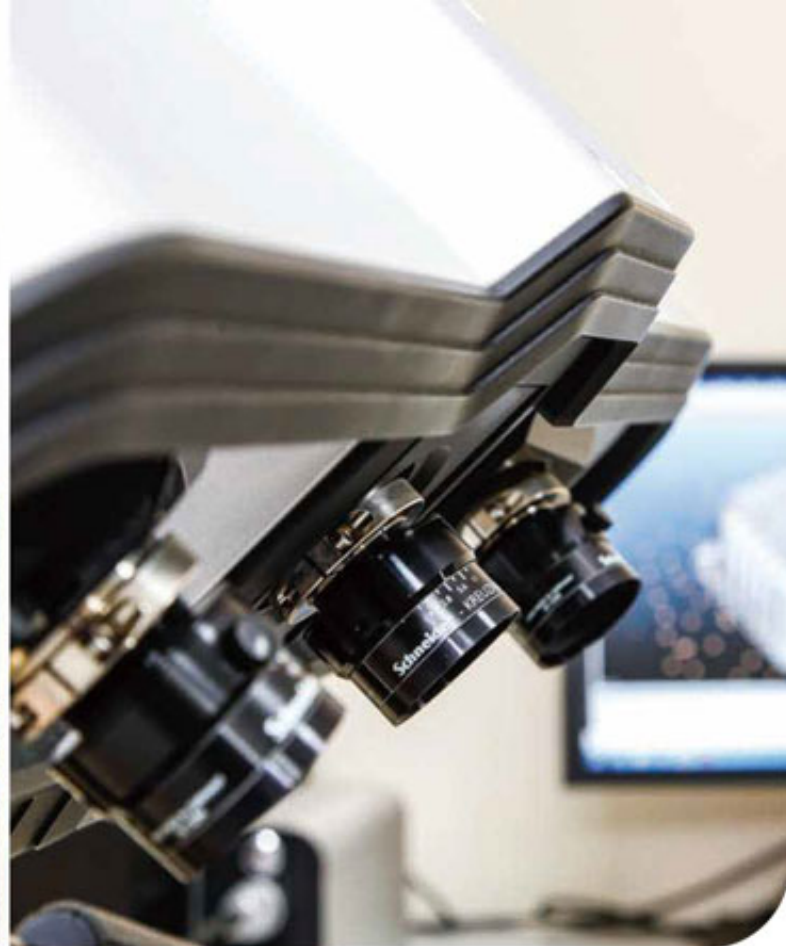
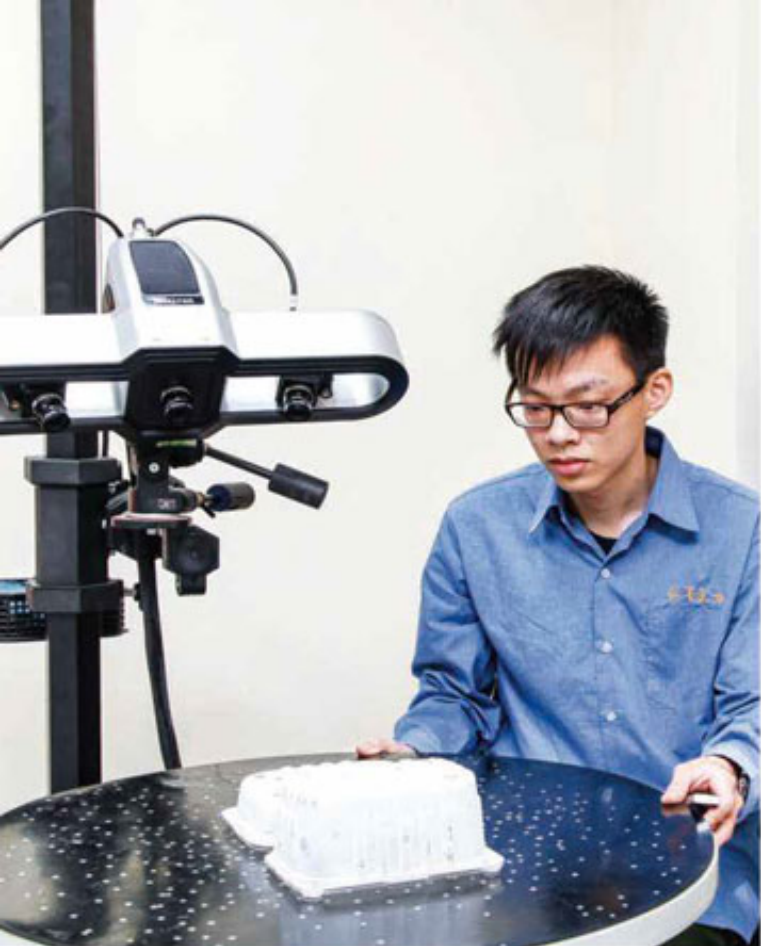
Featuring precision control is required to all tooling procedures. Extremely precise quality is applied to Hong Zu' s tools such as tilting tool; pre-punch tool, in-mould cutting tools, mold quick-change system, and excellent closure function have obtained solid reputation by all our customers.

Capable of high performance thermoforming tools in all sorts of machines in the world. Which are Irwin, TSL, Lyle, Brown Machine, GN, Sencorp, WM (MEICO), T2, ILLIG, Kiefer, Meaf, Gabler, Asano, Senba, Kansai, Wakitec, VFK, CME1000, and Sunwell.

In the years ahead, Hong Zu Mould will be developing much more superior moulds for both internal and external utilization of your production lines and will bring you enormous beneficial business opportunities and profits!

We are forming Your Life, and help you to pack Your Future.





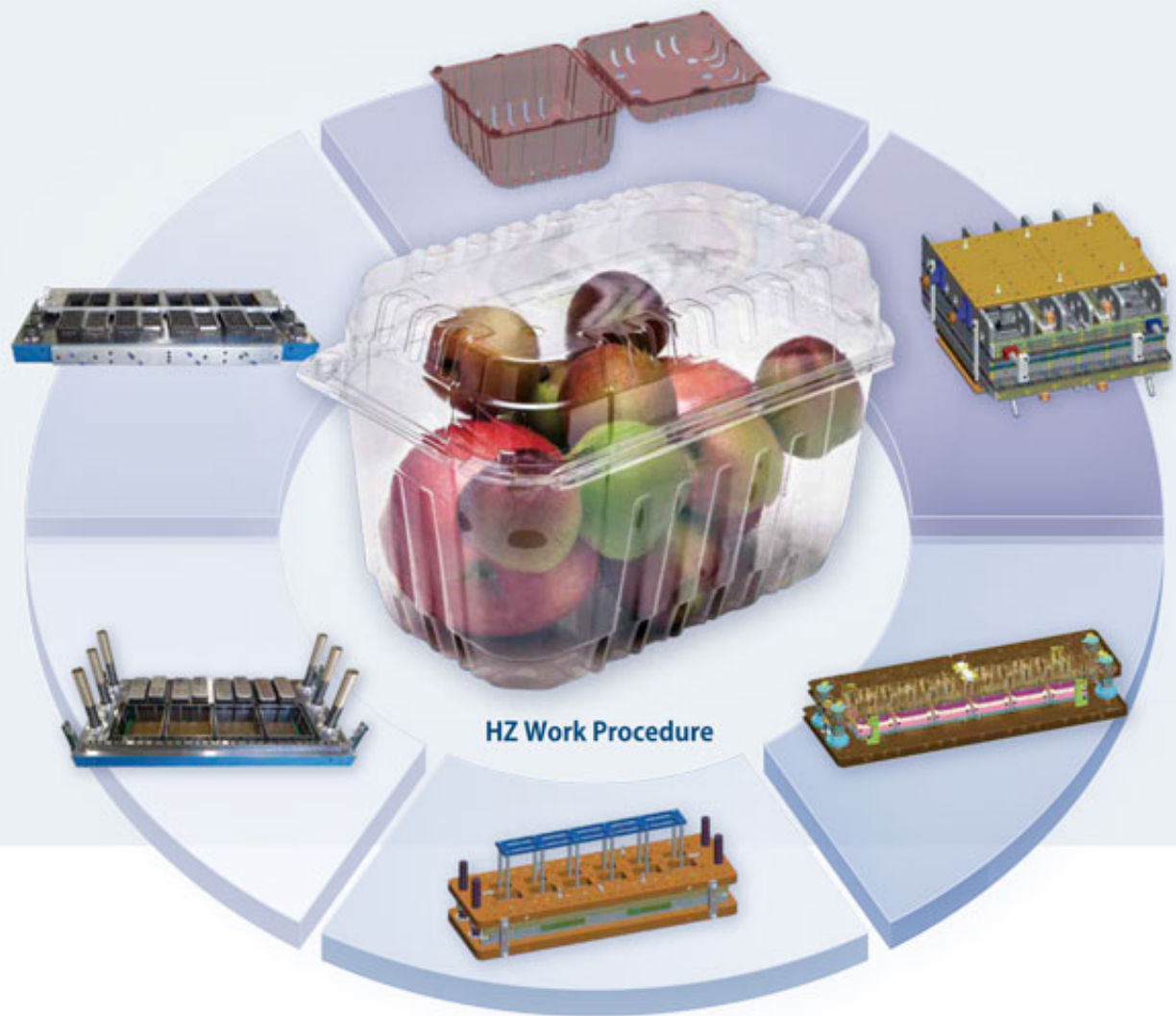
Hong Zu Tool Design Centre

Innovation Efficiency Precision

Excellent R & D Environment

The availability of qualified and experienced employees is decisive for the success of such a competence center.





HZ Design & engineer group

Prototype Processes: Total 8-15 working days: 5-7 days in design, 3-4 days in Prototyping, 2-3 days in review and approval .

Design: For initial review, HZ design Group provides our clients with 2D&3D drawing available with Pro-E, solidworks , AutoCAD in file format DXF/STP.

Prototyping: HZ provides 2 processes:

1.FDM rapid prototyping system provides faster service with ABS prototype cavity.

2.By using CNC machine to produce a AL prototype cavity.

Plastic samples: Either ABS or AL prototype can be installed in HZ vacuum forming machine to produce plastic samples for final physical test in fitting/ closing / volume before the whole tool production.

When the plastic sample is approved, our Engineering group will start to design, and go production After engineering drawings are approved by Production Manager

Inspection :

1st workpiece is always required for inspection before go production. Cooling and cutting function are test in process and finished tool.

Training & test run :

On-the-job-training is conducted in every dept., to improve the skill and knowledge in moulds.

Function test of Moulds / Tools are conducted in Taiwan before shipment

Service :

Two well-trained and skillful technician are always ready for pilot run at client's indicated plant.

Team Work





Hong Zu Production Centre



As a high quality mould supplier, We have well equipped facility to satisfy every order from every customers.

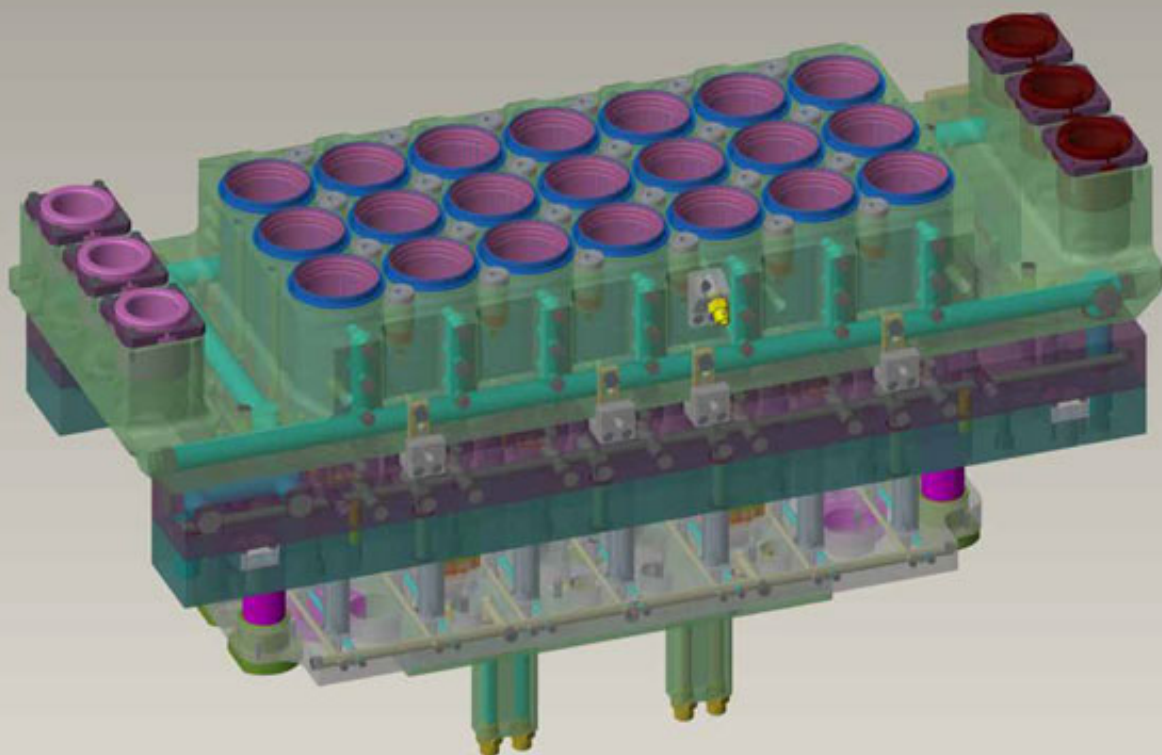
1. CNC machine: we have total 26 brand new CNC machines which run 24 hours a day, 7 days a week.
2. Prototyping former: before going to engineer design, we can provide samples by prototyping former for customer confirm
3. Jig Grinding: it can make sure all tools have precise tolerance and provide the best qualified tool.
4. FDM machine: with FDM machine, we can help rapid prototyping if you have urgent need for prototyping sample.
5. Forming machine 54" *54" : we have one 54" *54" forming machine when tool is completed, we can execute de-bug run before shipping.
6. 3D-scanner: our 3D machine can 100% recover your sample to the computer and make sure our prototype drawing is exactly you want.
7. 3MM measurement machine: 3 MM machine can measure every parts on the tool very precisely



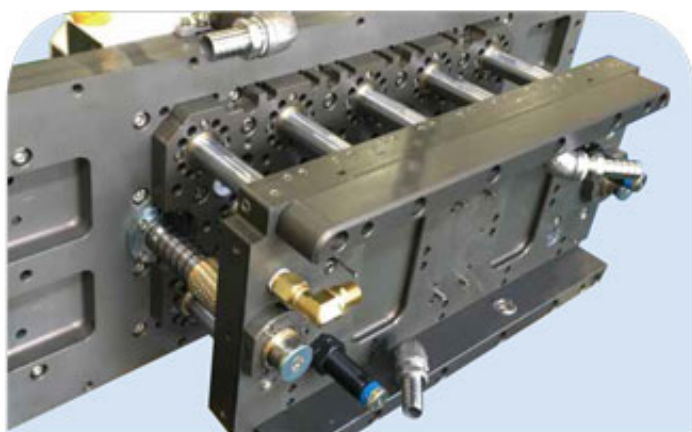


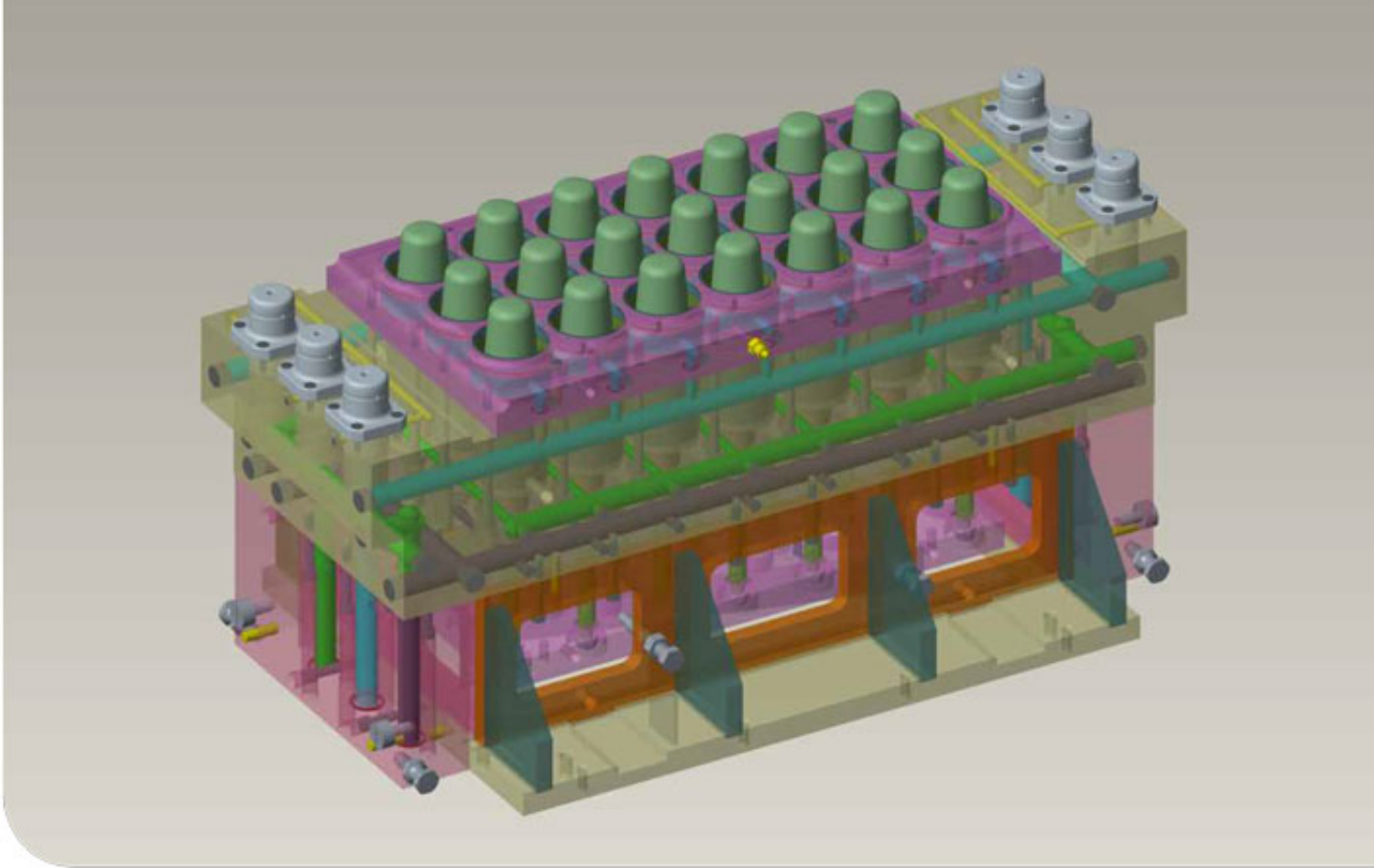
We believe that with the excellent facility we can provide the best tool which must exceed your expectation!





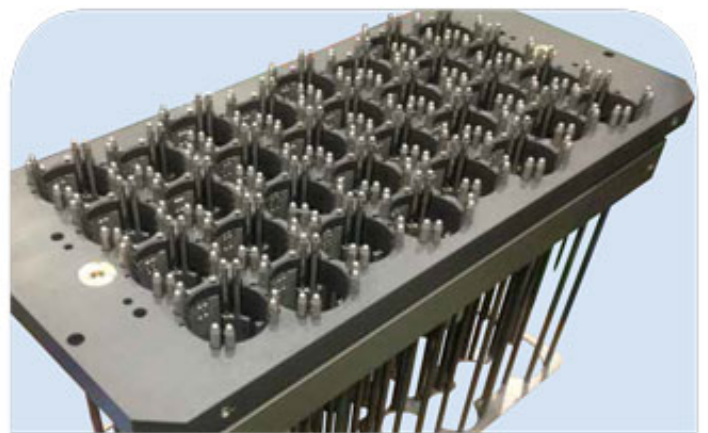
Hong Zu Tilting Mould

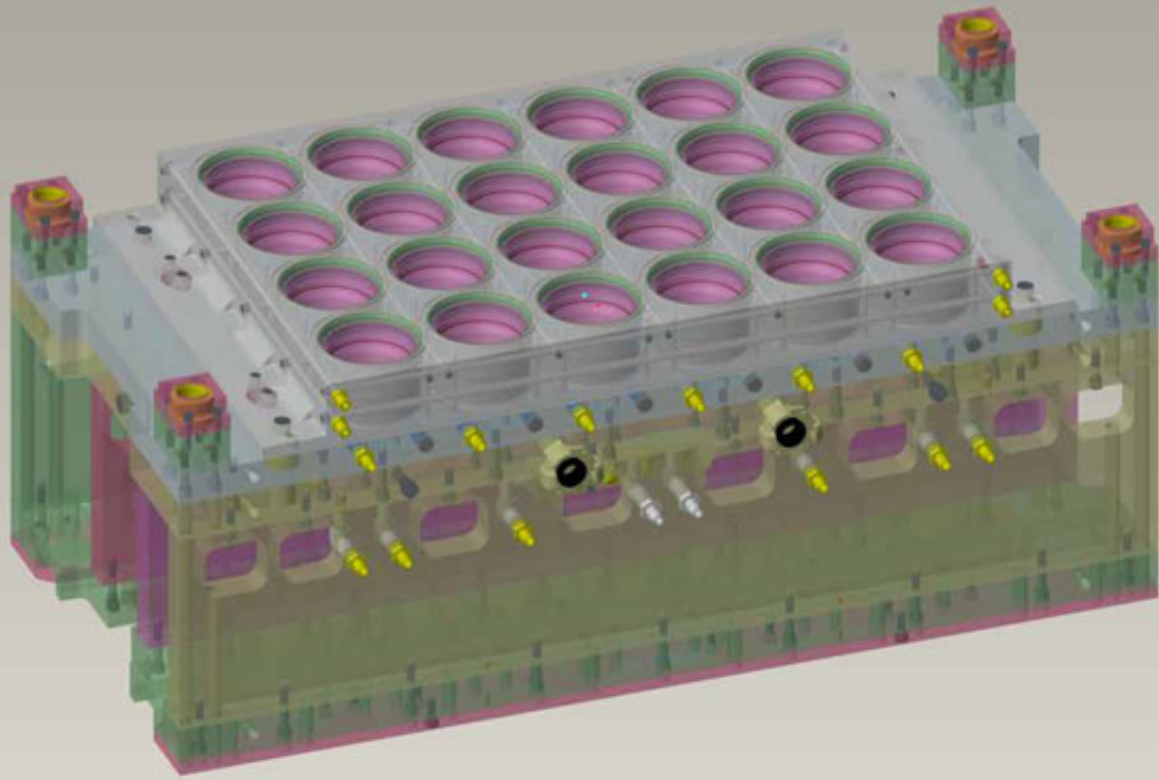




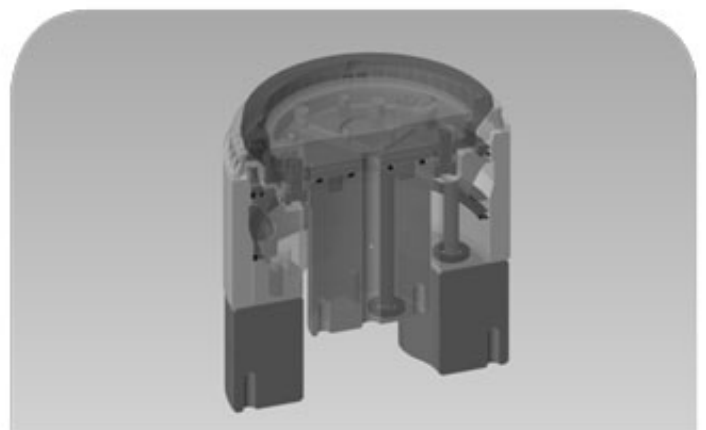
Machine:

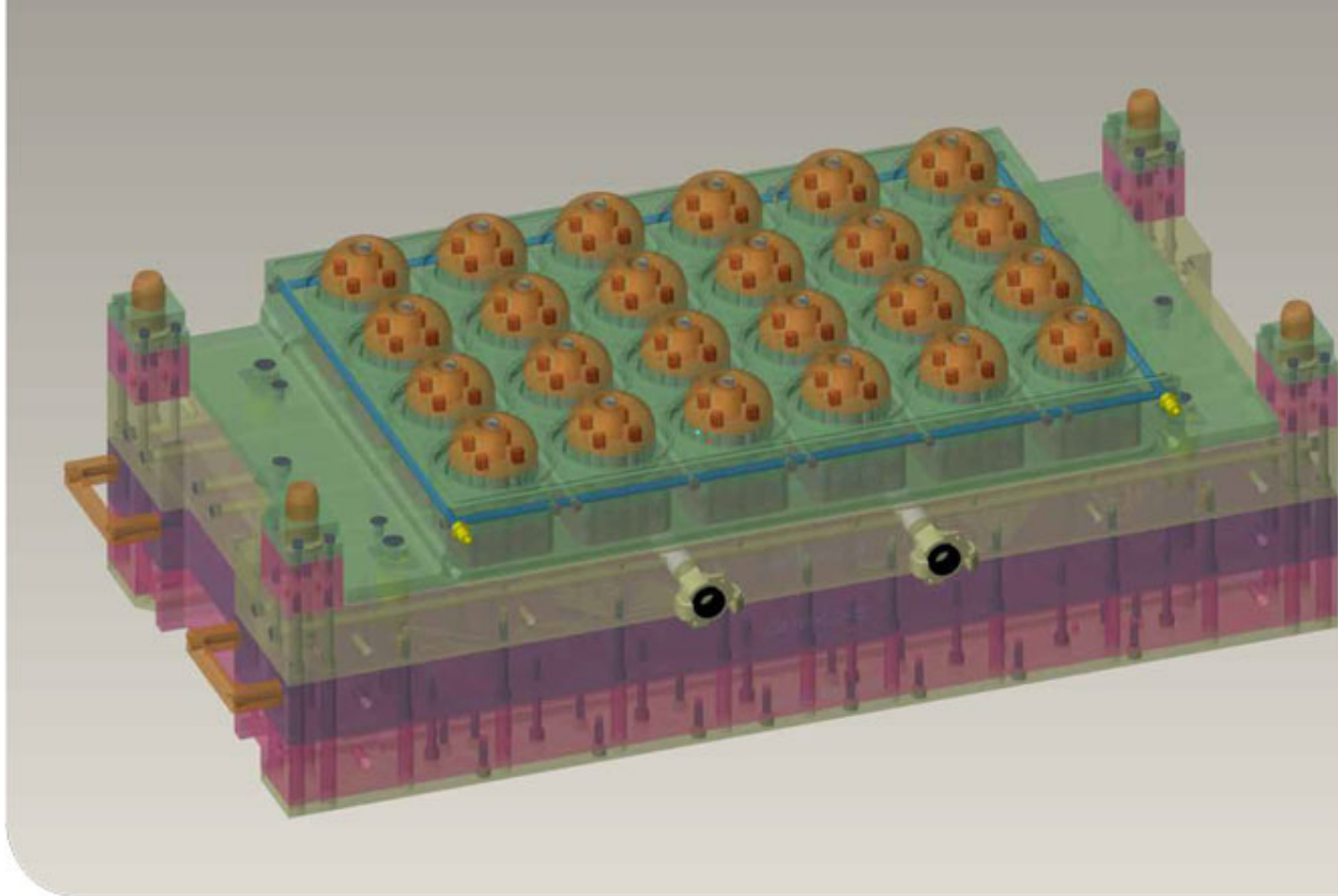
GABLER SWING and M Series, ILLIG RDM Series,
KIEFEL KTR Series, WM FT series, etc.





Hong Zu 3 & 4 station – Steel rule cutting mould





Machine:

GABLER FOCUS Series, KIEFEL KMD Series,
ILLIG RV and RDK Series, WM FC series, etc.

